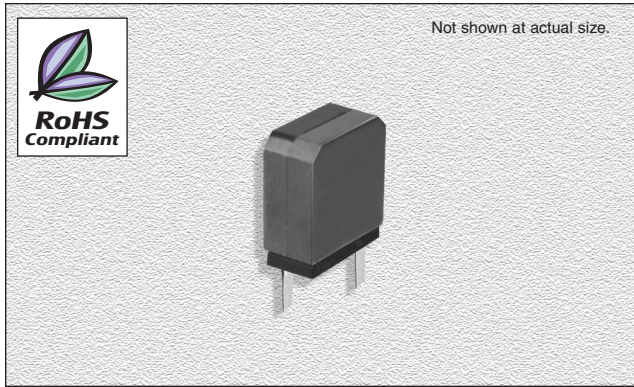


## CTDA13AF Series

From 10  $\mu\text{H}$  to 33  $\mu\text{H}$



### CHARACTERISTICS

**Description:** Inductor for digital amplifier LPF

**Applications:** Suitable as choke coil for digital amplifier. Audio, DVD 5.1ch home theater, AV amplifier, LCD, PDP. Usable as a choke coil for power supplies, etc.

**Features:** Compact and low-profile. Output 85W. Magnetically shielded structure and low DC resistance. High sound quality. Low electromagnetic interference. Low resistance and high current.

**Inductance Tolerance:**  $\pm 20\%$

**Testing:** Tested on a HP4284A at 1.0 KHz

**Packaging:** Bulk

**Marking:** Parts are marked with inductance code

**Miscellaneous:** **RoHS Compliant**

**Additional Information:** Additional electrical & physical information available upon request

**Samples available. See website for ordering information.**

### SPECIFICATIONS

Parts are available in  $\pm 20\%$  tolerance only.

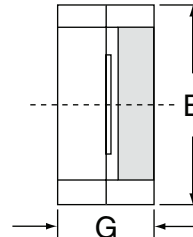
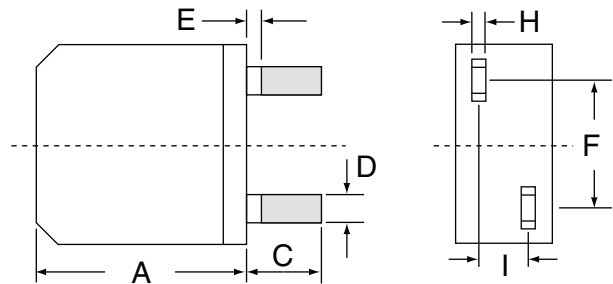
\* Rated DC Current: Inductance drift is within  $-25\%$  at the superposition

\*\* Allowable Current: A rise in temp. of surface core within  $40^\circ\text{C}$ .

Part Number	Inductance ( $\mu\text{H} \pm 20\%$ )	L Test Freq. (KHz)	DCR Max. (m $\Omega$ )	*Rated DC Current (A)	**Allowable DC Current (A)
CTDA13AF-100M	10	1.0	5.4	6.0	8.0
CTDA13AF-150M	15	1.0	6.8	5.0	7.5
CTDA13AF-220M	22	1.0	8.1	4.2	7.0
CTDA13AF-270M	27	1.0	13.5	3.8	5.6
CTDA13AF-330M	33	1.0	14.7	3.4	5.3

### PHYSICAL DIMENSIONS

Size	A Max.	B	C	D	E Max.	F
mm	15.0	13.0 $\pm$ 0.5	5.0 $\pm$ 1.0	1.8 $\pm$ 0.5	1.0	8.4 $\pm$ 0.5
inches	0.59	0.51 $\pm$ 0.02	0.2 $\pm$ 0.039	0.071 $\pm$ 0.02	0.039	0.33 $\pm$ 0.02



Tolerance:  $\pm 0.5\text{mm}$

L( $\mu\text{H}$ )	G	I	H
10	6.4	3.3	0.5/0.33
15	8.4	4.0	0.5
22	8.4	4.8	0.5
27	8.4	4.0	0.33
33	8.4	4.8	0.33

06.29.07