

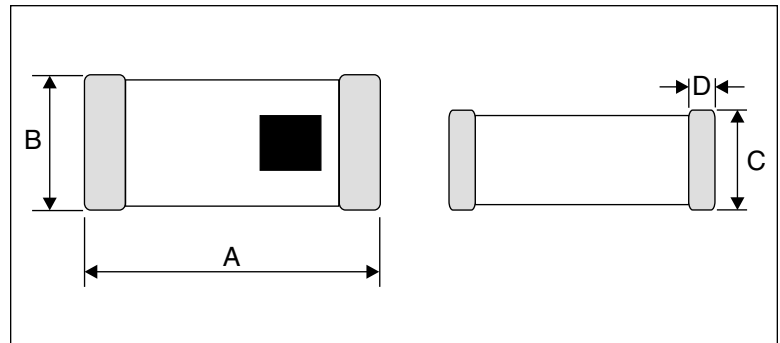
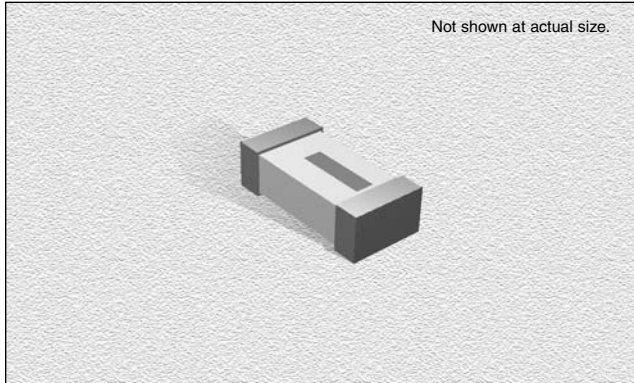
## CTMCA3216 Series

### SPECIFICATIONS

Part Number	Frequency Range (MHz)	Peak Gain (XZ-V)	Average Gain (XZ-V)	Return Loss	Impedance ( $\Omega$ )
CTMCA3216-2R4	2400~2500	0.5 dBi typ.	-0.5 dBi typ.	9.5 dB min.	50
CTMCA3216-4R9	4900~5900	2.0 dBi typ.	-2.5 dBi typ.	9.5 dB min.	50

### PHYSICAL DIMENSIONS

Size	A	B	C	D
mm	3.20±0.2	1.60±0.2	1.3+0.1/-0.2	0.5±0.3
inches	0.126±0.008	0.063±0.008	0.051+0.004/-0.008	0.020±0.012



### CHARACTERISTICS

**Description:** Multi-layer Chip Antenna

**Features:** Monolithic SMD type. Wide bandwidth

**Applications:** WLAN, Home RF, Bluetooth Modules, etc.

**Operating Temperature:** -40°C to +85°C

**Storage Temperature:** -40°C to +85°C

**Input Power:** 500mW Max.

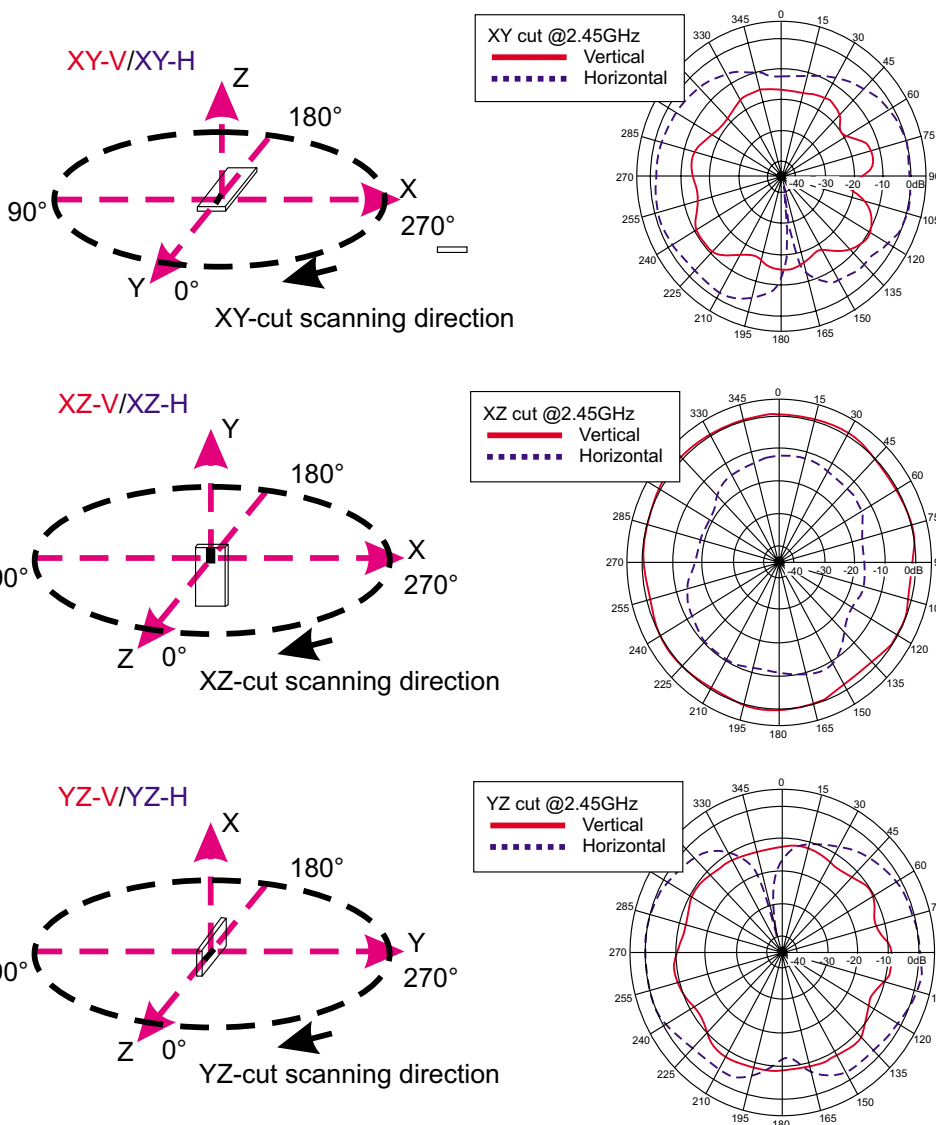
**Packaging:** Tape & Reel

**Additional Information:** Additional electrical & physical information available upon request

**Samples available. See website for ordering information.**

11.17.04

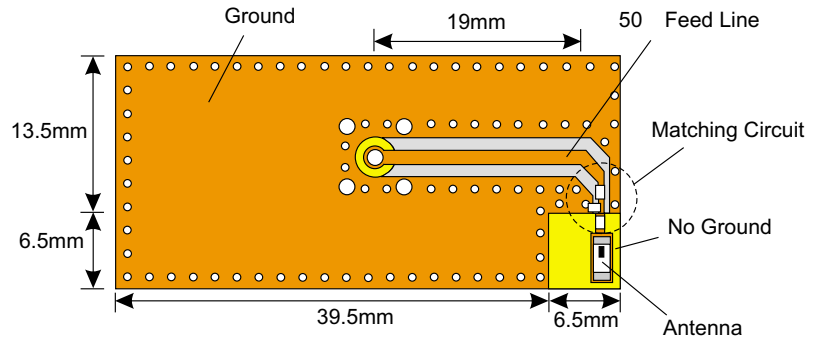
### Typical Radiation Patterns



11.17.04

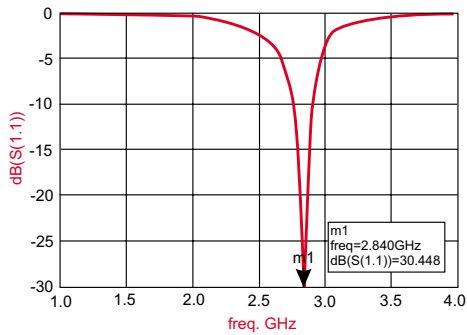
### Typical Electrical Characteristics (T=25°C)

#### Test Board:

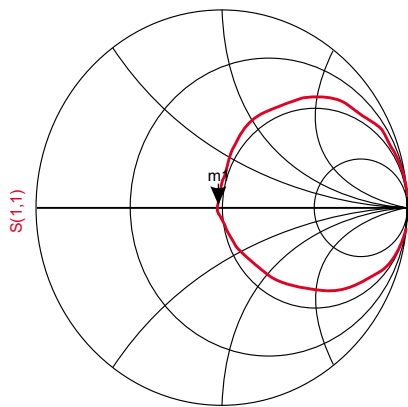
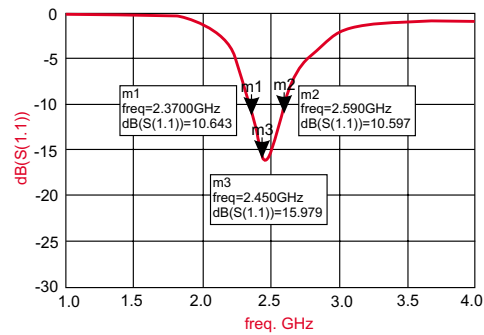


#### Return Loss

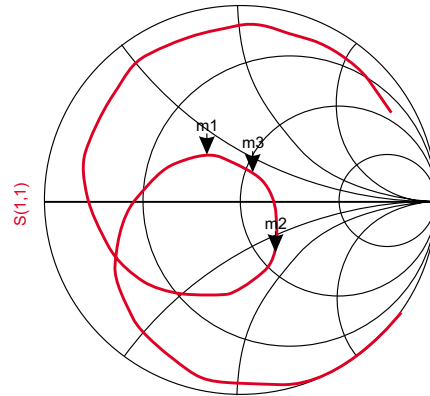
##### a) Without Matching Circuits



##### b) With Matching Circuits

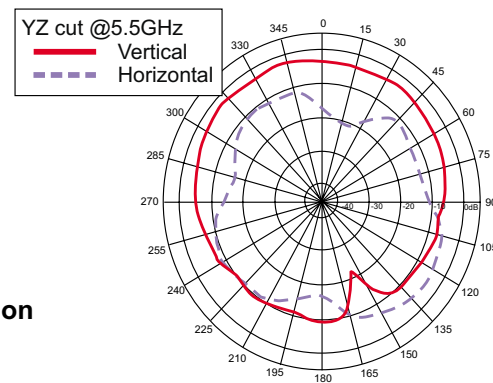
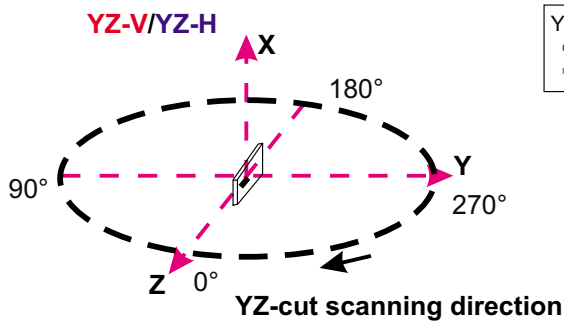
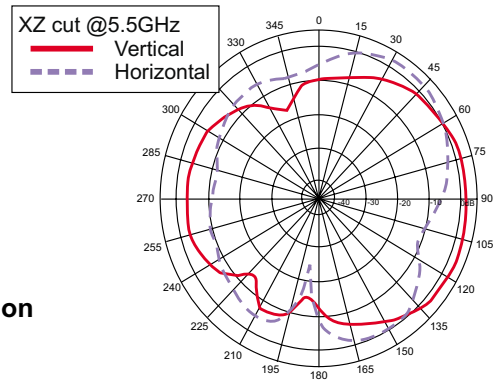
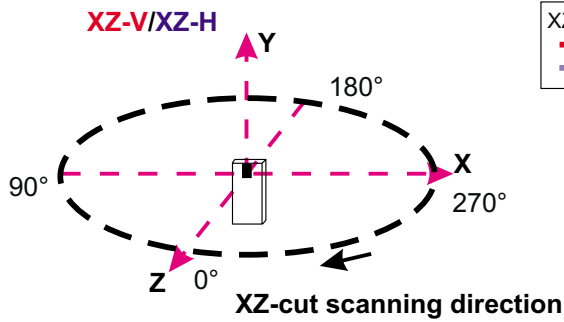
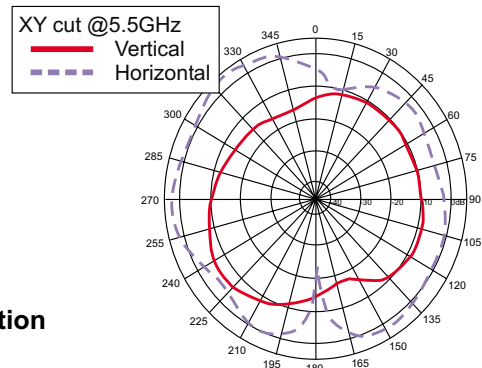
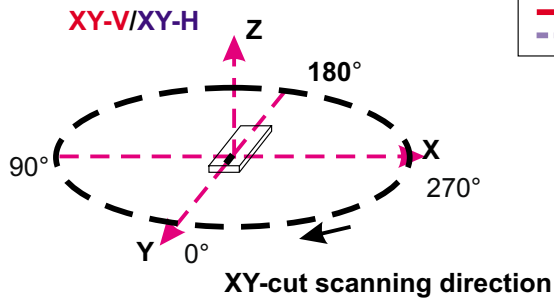


freq. (1.000GHz to 4.000GHz)



freq. (1.000GHz to 4.000GHz)

### Typical Radiation Patterns

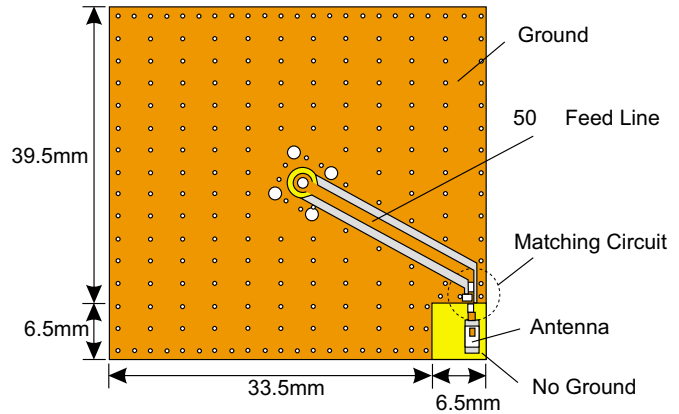


11.17.04

## CTMCA3216-4R9

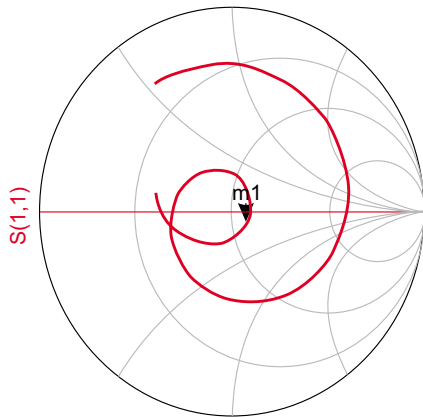
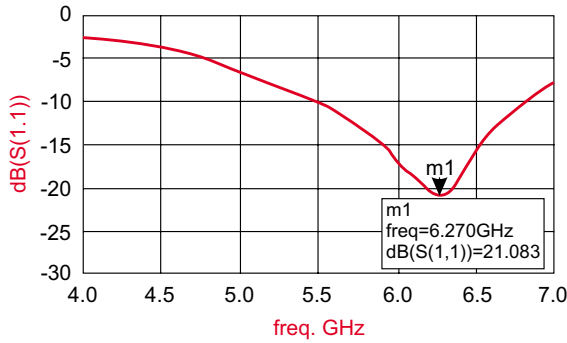
### Typical Electrical Characteristics (T=25°C)

Test Board:



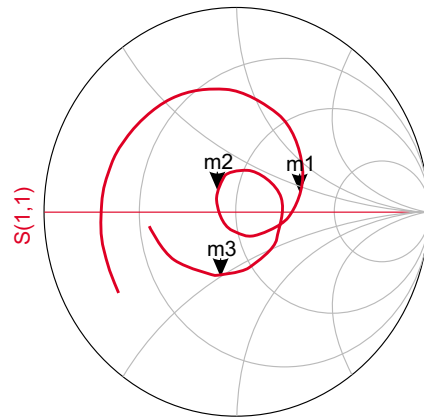
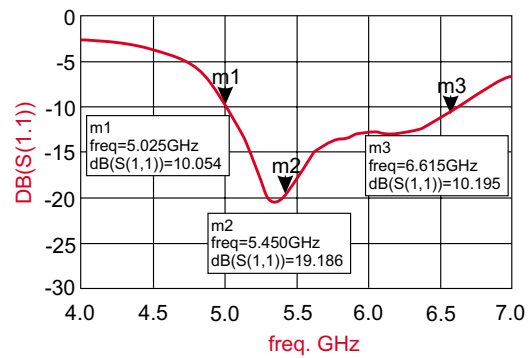
Return Loss

a) Without Matching Circuits



freq (4.000GHz to 7.000GHz)

b) With Matching Circuits



freq (4.000GHz to 7.000GHz)