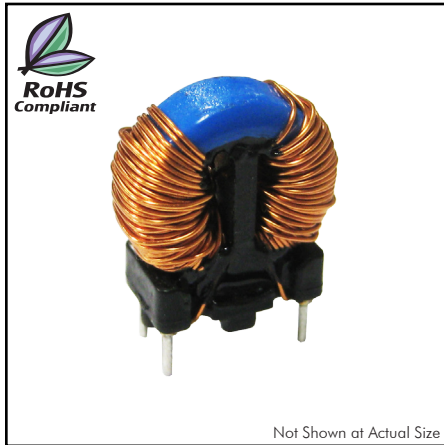


CTCMPCF Series

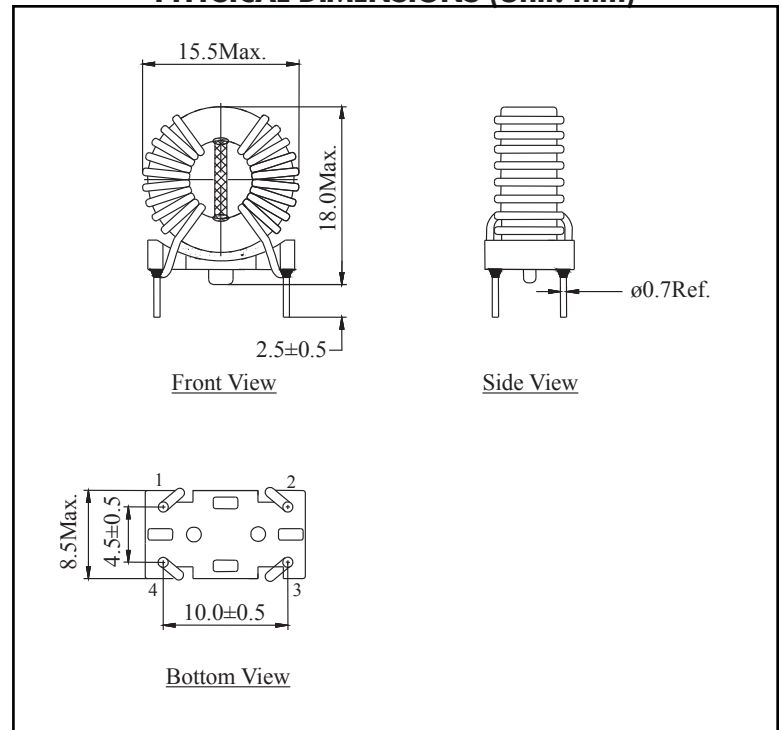
From 1.0mH to 39mH

SPECIFICATIONS

Part Number	Inductance $\pm 30\%$ (1-4 / 2-3) (mH)	Rated Current (A)	DCR Max. (1-4 / 2-3) (m Ω)
CTCMPCF-102	1.0	2.0	45
CTCMPCF-402	4.0	1.5	140
CTCMPCF-502	5.0	1.0	220
CTCMPCF-103	10.0	0.7	350
CTCMPCF-203	20.0	0.5	1000
CTCMPCF-393	39.0	0.3	3000



PHYSICAL DIMENSIONS (Unit: mm)



CHARACTERISTICS

Description: Toroidal common mode power line chokes

Applications: Power electronics, Power line input and output filter, Radio interference suppression in motors, Suppression of common mode noise, For filtering of devices without stable ground connection, etc.

Design Features:

- Toroidal Ferrite Core
- Windings Separated
- Header and Spacer made of UL94V-0 plastic material
- Core insulated with UL recognised epoxy coating
- Customisation can be checked upon request

Packaging: Bulk

Operating Temperature: -40°C to +125°C

Inductance Test Conditions:

- Measured at 20°C
- Test Current: 0.1mA
- Test Frequency: 10kHz

Rated Voltage: 250 Vac

High Voltage Test: 1500 Vac, 50Hz, 2sec (winding to winding)

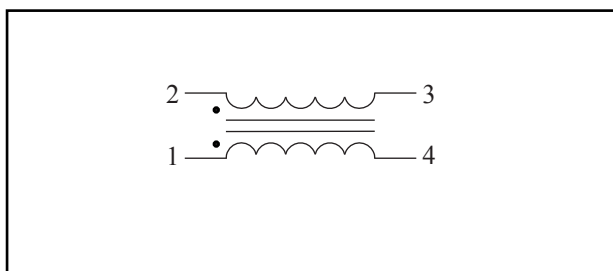
Rated Current: At 50Hz and 70°C

DCR: Measured at 20°C

Miscellaneous: RoHS Compliant.

Samples available. See website for ordering information.

SCHEMATIC



RECOMMENDED HOLE PATTERN (Unit: mm)

