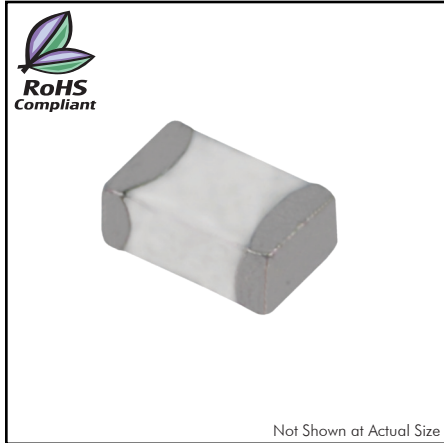


## CTLL2012F Series

From 1.5 nH to 220 nH

ENGINEERING KIT #6F



### SPECIFICATIONS

Please specify tolerance code when ordering.  
 CTLL2012F-3N3 ← S = ±0.3nH, J = ±5%, K = ±10%  
 \* S or K only \*\*J or K only

Part Number	Inductance (nH)	L Test Freq. (MHz)	Q Factor Min.	Q Test Freq. (MHz)	SRF Typ. (MHz)	DCR Max. (Ω)	Rated DC (mA)
CTLL2012F-1N5S	1.5	100	10	100	>6000	.10	300
CTLL2012F-1N8S	1.8	100	10	100	>6000	.10	300
CTLL2012F-2N2S	2.2	100	10	100	>6000	.10	300
CTLL2012F-2N7S	2.7	100	12	100	>6000	.12	300
CTLL2012F-3N3_*	3.3	100	12	100	>6000	.13	300
CTLL2012F-3N9_*	3.9	100	12	100	5600	.15	300
CTLL2012F-4N7_*	4.7	100	12	100	5500	.20	300
CTLL2012F-5N6_*	5.6	100	12	100	4700	.23	300
CTLL2012F-6N8_**	6.8	100	15	100	3900	.25	300
CTLL2012F-8N2_**	8.2	100	15	100	3200	.28	300
CTLL2012F-10N_**	10	100	15	100	3100	.30	300
CTLL2012F-12N_**	12	100	15	100	2800	.35	300
CTLL2012F-15N_**	15	100	15	100	2400	.40	300
CTLL2012F-18N_**	18	100	15	100	2100	.45	300
CTLL2012F-22N_**	22	100	15	100	2000	.50	300
CTLL2012F-27N_**	27	100	15	100	1800	.55	300
CTLL2012F-33N_**	33	100	15	100	1700	.60	300
CTLL2012F-39N_**	39	100	18	100	1400	.65	300
CTLL2012F-47N_**	47	100	18	100	1200	.70	300
CTLL2012F-56N_**	56	100	18	100	1000	.75	300
CTLL2012F-68N_**	68	100	18	100	900	.80	300
CTLL2012F-82N_**	82	100	18	100	900	.85	300
CTLL2012F-R10_**	100	100	18	100	700	.90	300
CTLL2012F-R12_**	120	50	13	50	600	.95	300
CTLL2012F-R15_**	150	50	13	50	500	1.0	300
CTLL2012F-R18_**	180	50	13	50	430	1.1	300
CTLL2012F-R22_**	220	50	12	50	400	1.2	300

### CHARACTERISTICS

**Description:** Ceramic core, multi-layer chip inductor for high frequency applications.

**Applications:** Portable telephones, PMS, pages and miscellaneous high frequency circuits.

**Operating Temperature:** -40°C to +100°C

**Inductance Tolerance:** ±0.3nH, ±5% & ±10%

**Testing:** Inductance and Q are tested on an HP4286A at specified frequency.

**Packaging:** Tape & Reel.

**Marking:** Reels marked with inductance code and tolerance.

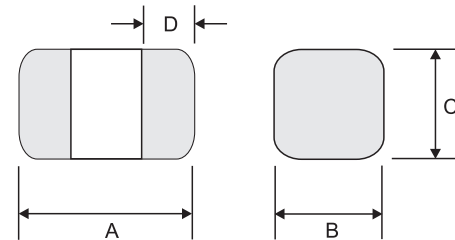
**Miscellaneous:** **RoHS Compliant.** Other values available.

**Additional Information:** Additional electrical & physical information available upon request.

**Samples available. See website for ordering information.**

### PHYSICAL DIMENSIONS

Size	A	B	*C	D
mm	2.0±0.2	1.20±0.2	0.9±0.2	0.50±0.30
inches	0.08±0.008	0.05±0.008	0.04±0.008	0.02±0.01



\*Dimension "C" for values 390nH and 470nH: 1.2±0.2mm (0.05±0.008")

### PAD LAYOUT

