

CTSFW1040CF Series

From .18 μ H to 6.8 μ H



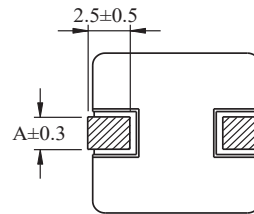
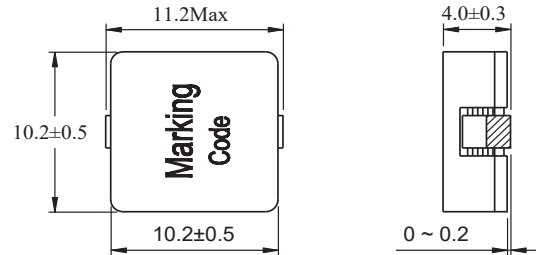
SPECIFICATIONS

*Isat: Value of inductance decrease within 30%
 **I_{rms}: A rise in temperature of core surface is within 50°C

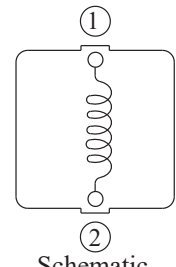
Part Number	Inductance $\pm 20\%$ (μ H)	DCR Nom.(Max.) (m Ω)	I _{sat} (A) Drop $\leq 30\%$	I _{rms} (A) Rise $\leq 50^\circ$ C
CTSFW1040CF-R18M	0.18	0.61(0.70)	80.00	30.00
CTSFW1040CF-R38M	0.38	1.11(1.28)	65.00	22.00
CTSFW1040CF-R66M	0.66	1.84(2.20)	50.00	18.00
CTSFW1040CF-1R0M	1.00	3.01(3.50)	41.00	16.00
CTSFW1040CF-1R5M	1.50	4.64(5.50)	33.00	14.00
CTSFW1040CF-2R2M	2.20	6.90(7.90)	28.00	11.00
CTSFW1040CF-2R7M	2.70	6.90(7.90)	22.00	11.00
CTSFW1040CF-3R5M	3.50	8.65(10.0)	19.00	9.50
CTSFW1040CF-4R5M	4.50	11.3(13.0)	16.00	8.00
CTSFW1040CF-5R6M	5.60	13.7(15.8)	14.50	7.20
CTSFW1040CF-6R8M	6.80	20.5(23.6)	13.00	5.60

PHYSICAL DIMENSIONS

Unit: mm



Part No	R18-R66	1R0-6R8
Dimension A	2.5	2.0



CHARACTERISTICS

Description: SMD flat wire high current power inductors

Features:

- Magnetic shielded structure, excellent resistance to electromagnetic interference
- Flat wire winding, achieve a low DC resistance
- Lightweight design, save space, suitable for high density SMT

Applications: Graphic cards, Industrial computers, DC/DC converters, Motherboards, High current switching regulators, Polyphase-switching regulators, etc.

Operating Temperature: -55°C to +150°C (including coil's self temperature rise)

Storage Temperature: -40°C to +125°C

Moisture Sensitivity Level (MSL): 1

Inductance Tolerance: $\pm 20\%$

Testing: Inductance at 100kHz, 0.5V

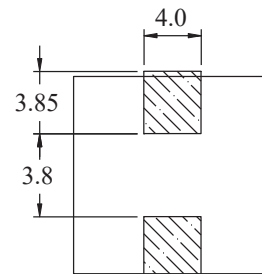
Packaging: Tape & Reel.

Miscellaneous: **RoHS Compliant.**

Samples available. See website for ordering information.

PAD LAYOUT

Unit: mm



CTSFW1040CF Series

Saturation Current vs Temperature Rise Current Curve

