

CTSPMA5015F Series

From .47 μ H to 10 μ H



SPECIFICATIONS

Parts are available in $\pm 20\%$ inductance tolerance only

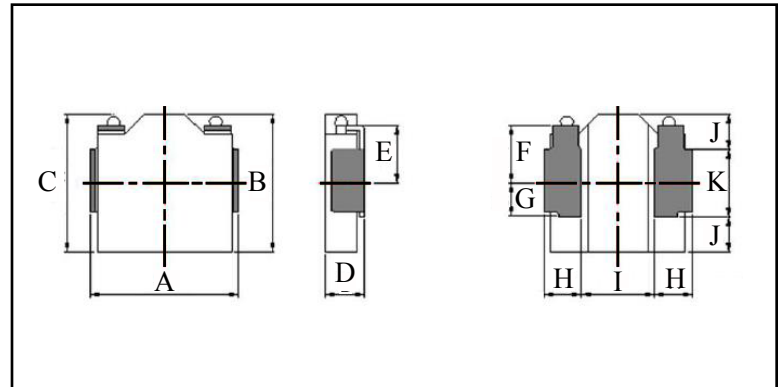
Part Number	Inductance (μ H)	L Test Condition	DCR Max. (m Ω)	Isat Max. (A)	Irms Max. (A)
CTSPMA5015F-R47M	0.47	100KHz, 1V	11.2	12.5	8.5
CTSPMA5015F-R68M	0.68	100KHz, 1V	14.5	12.0	7.3
CTSPMA5015F-1R0M	1.00	100KHz, 1V	17.5	9.6	6.7
CTSPMA5015F-1R5M	1.50	100KHz, 1V	24.2	8.4	5.6
CTSPMA5015F-2R2M	2.20	100KHz, 1V	38.2	7.4	4.7
CTSPMA5015F-3R3M	3.30	100KHz, 1V	51.0	5.2	4.2
CTSPMA5015F-4R7M	4.70	100KHz, 1V	73.5	4.5	3.3
CTSPMA5015F-6R8M	6.80	100KHz, 1V	130.0	3.7	2.4
CTSPMA5015F-100M	10	100KHz, 1V	164.0	2.7	2.1

PHYSICAL DIMENSIONS

Size	A	B	C	D	E	F
			Max.	Max.		
mm	5.4 \pm 0.2	5.1 \pm 0.2	5.4	1.5	2.0	2.0
inches	0.21 \pm 0.008	0.20 \pm 0.008	0.21	0.059	0.079	0.079
Size	G	H	I	J	K	
mm	1.25	1.20 \pm 0.1	3.0	1.30 \pm 0.1	2.5	
inches	0.049	0.047 \pm 0.004	0.118	0.051 \pm 0.004	0.098	

CHARACTERISTICS

Description: SMD (shielded) Power Inductors
Applications: Smart phones, Notebook PC's, Tablets, HDD's, Servers, VRM's, Compact power supply modules, etc.
Saturation Rated Current (Isat): The DC current when the when the inductance becomes 30% lower than its initial value. (Ta=25°C)
Temperature Rise Current (Irms): The actual current when temperature of coil becomes $\Delta T 40^\circ\text{C}$. (Ta=25°C)
Operating Temperature Range: -55°C to 155°C
Markings: Inductance Code
Miscellaneous: RoHS compliant
Samples available. See website for ordering information.



PAD LAYOUT

